



# MINETRACK

**MINETRACK.** FLEET MANAGEMENT. MINING & CIVIL WORKS

**CIVILNOVA**  
SOLUTIONS

empresa innovadora de base tecnológica

reconocida  
por ANCES

**PI**bt

**RP** **TEC**

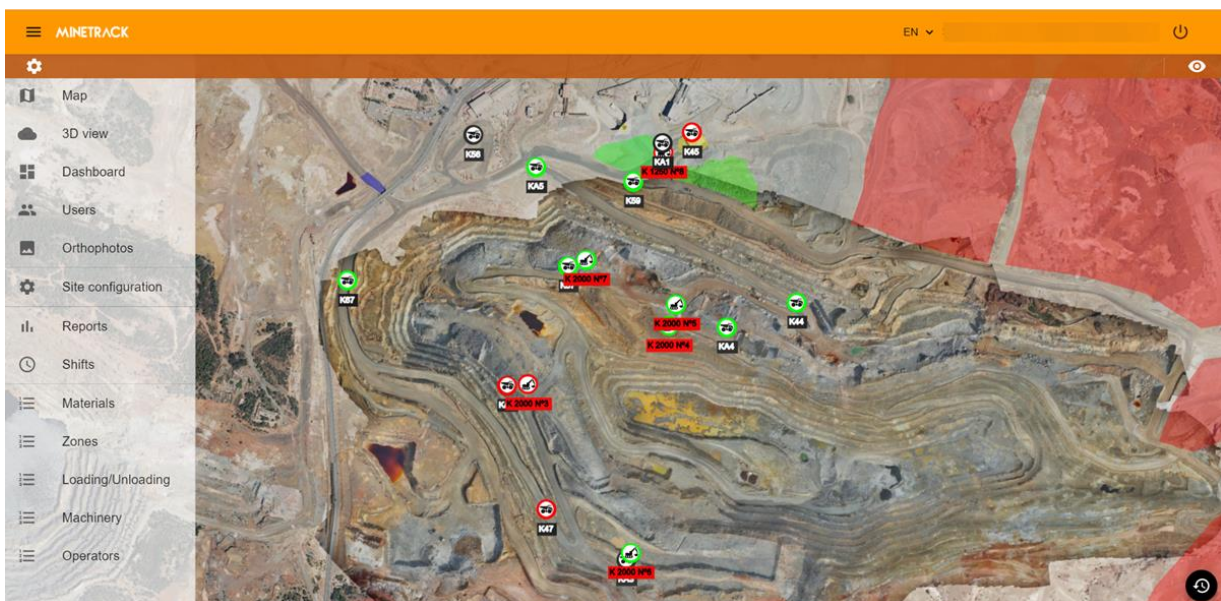
**MINETRACK** is a comprehensive solution for managing fleets of machinery and vehicles for mining and civil works. MINETRACK was born from the collaboration between two companies with extensive experience in mining, civil works, and, of course, in developing solutions for this sector, such as RPTEC and CIVILNOVA SOLUTIONS.

[www.civilnova.com](http://www.civilnova.com) / [www.rptec.es](http://www.rptec.es)



## WHY MINETRACK?

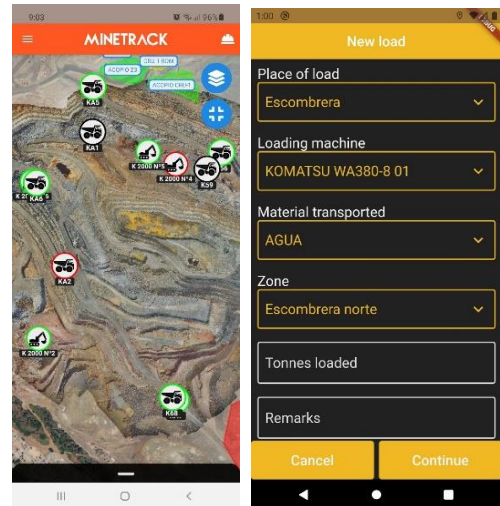
**MINETRACK** is a software tool developed by professionals in the sector following the indications and recommendations of clients with years of experience in this type of work. In addition to this accumulated experience, we can use the latest technologies to develop applications to obtain a final product that is easy to use, efficient and robust.





MINETRACK's central capability is continuously storing and monitoring the operational team activities during the operations, whether they are loading operations, transport operations, or other operations, being stored and monitored in the platform in the Cloud.

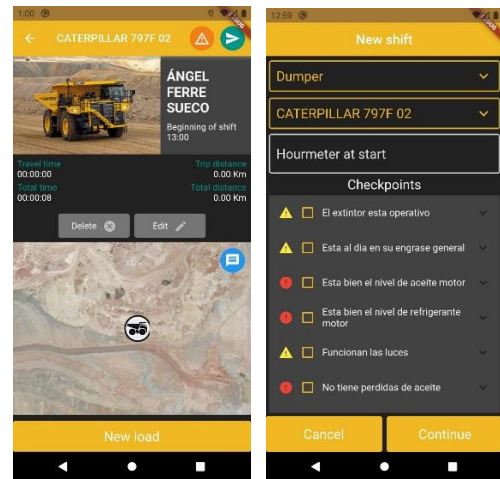
Information related but not limited to the equipment and operators identification, locations, origins, destinations, and type of material being transported, equipment status check reports, incidents, odometer data, refueling are stored in the system for subsequent use and analysis.



## CUSTOMISABLE DATA RECORDING

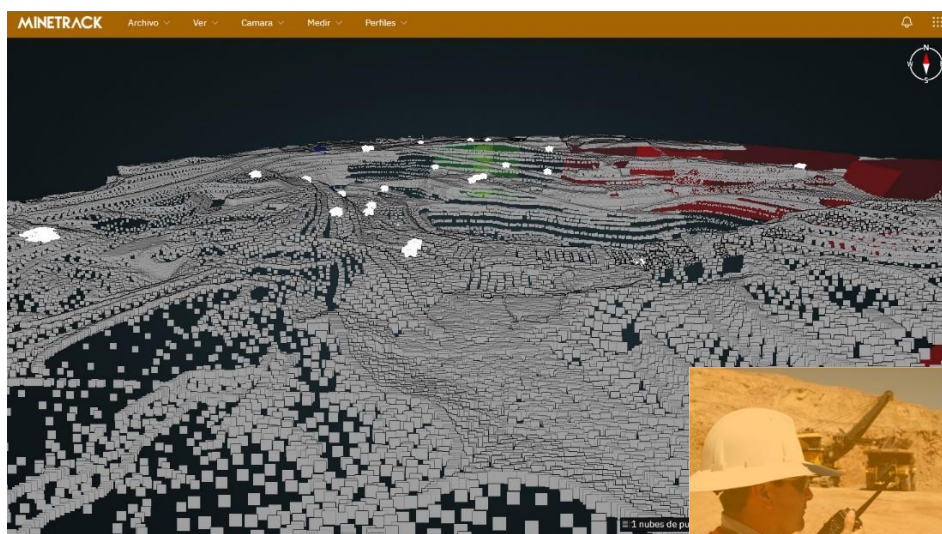
The system allows the user to define the data to be stored, thus avoiding the lack of information or an excess of it, which might affect the usability of the software.

**MINETRACK** is, above all, a versatile tool that can be adapted to the specific needs of each client and operation.



## ONLINE MONITORING

Monitor and follow up the activities online. Check always where the equipment is and what action is being carried out by each one. Also, integrate layers with georeferenced images that will allow you to exploit spatial information.



Mine points cloud. Fleet 3D online view

## WARNINGS & ALARMS

An advanced system of warnings and alarms will allow you to generate:

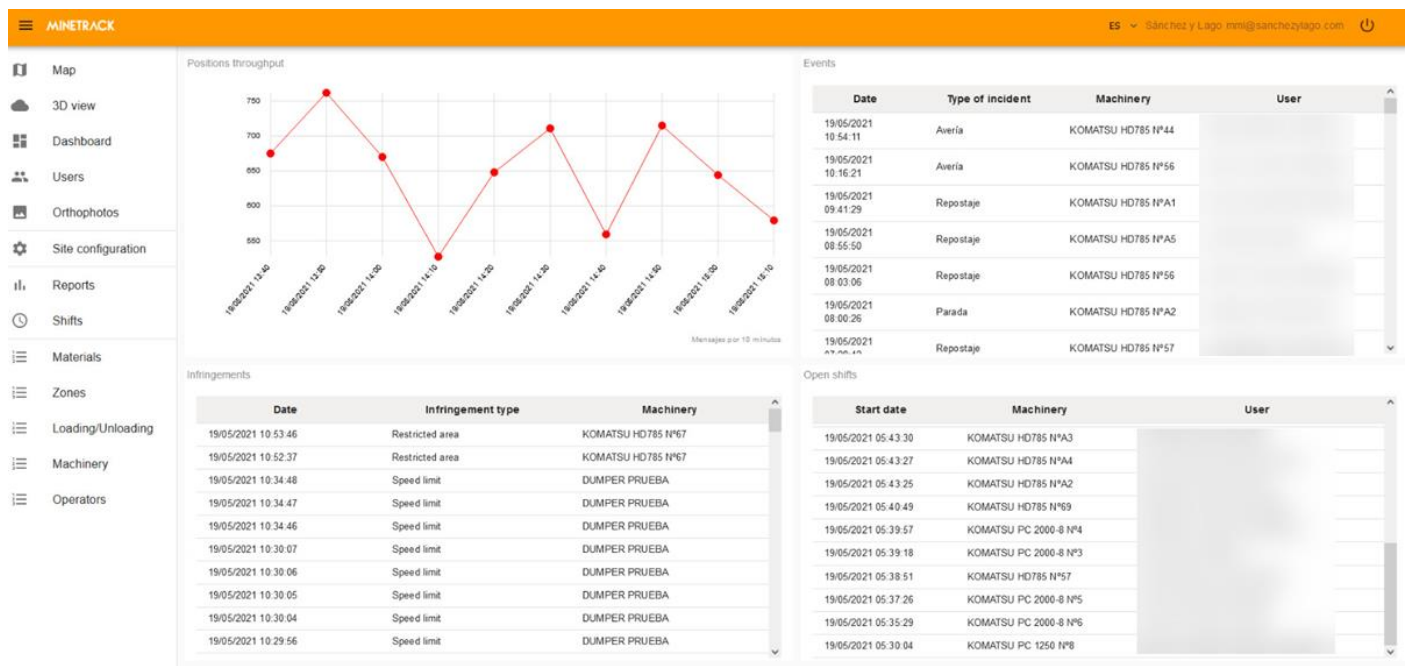
- ✓ Incident alerts.
- ✓ Alerts by geographical areas, with combined alarms, such as a dumper entering a dump area loaded with ore.
- ✓ Alerts due to inactivity.
- ✓ Etc.

The system allows the configuration of alarms according to the particularities of each operation.



## WORK SPREADSHEETS AND REPORTS INTEGRATION

MINETRACK allows easy integration of the information from the different shifts and works teams to generate spreadsheets and other reports on production, performance, consumption, etc.



Minetrack dashboard

## INCIDENTS WITH THE MACHINERY

The system allows immediate knowledge of the machinery's revision reports, allowing us to know the incidences before starting the work and therefore optimizing the decisions related to maintenance.

MINETRACK						
<div> <div> <div>Map</div> <div>3D view</div> <div>Dashboard</div> <div>Users</div> <div>Orthophotos</div> <div>Site configuration</div> <div>Reports</div> <div>Shifts</div> <div>Materials</div> <div>Zones</div> <div>Loading/Unloading</div> <div>Machinery</div> <div>Operators</div> </div> <div> <div>Search</div> <div>Q</div> </div> </div>						
Active	Short name	Name	Description	Type	Colour	
<input type="checkbox"/>	CAT 390	CATERPILLAR 390		Excavadora de orugas		
<input checked="" type="checkbox"/>	CUBA 2	KOMATSU HD 785 N°C2		Cuba		
<input type="checkbox"/>	6015 N°2	CATERPILLAR 6015B N°2		Excavadora de orugas		
<input checked="" type="checkbox"/>	CUBA 3	KOMATSU HD 785 N°C3		Cuba		
<input type="checkbox"/>	6015 N°3	CATERPILLAR 6015B N°3		Excavadora de orugas		
<input checked="" type="checkbox"/>	K 2000 N°1	KOMATSU PC 2000-8 N°1		Excavadora de orugas		
<input checked="" type="checkbox"/>	K 2000 N°2	KOMATSU PC 2000-8 N°2		Excavadora de orugas		
<input checked="" type="checkbox"/>	K 2000 N°3	KOMATSU PC 2000-8 N°3		Excavadora de orugas		
<input checked="" type="checkbox"/>	K 2000 N°4	KOMATSU PC 2000-8 N°4		Excavadora de orugas		
<input checked="" type="checkbox"/>	K 2000 N°5	KOMATSU PC 2000-8 N°5		Excavadora de orugas		
<input checked="" type="checkbox"/>	K 2000 N°6	KOMATSU PC 2000-8 N°6		Excavadora de orugas		

Machinery

## MULTIPROJECT

The platform allows the concurrent management of multiple projects and analyzes the data collected individually or together.

## OPEN DATA

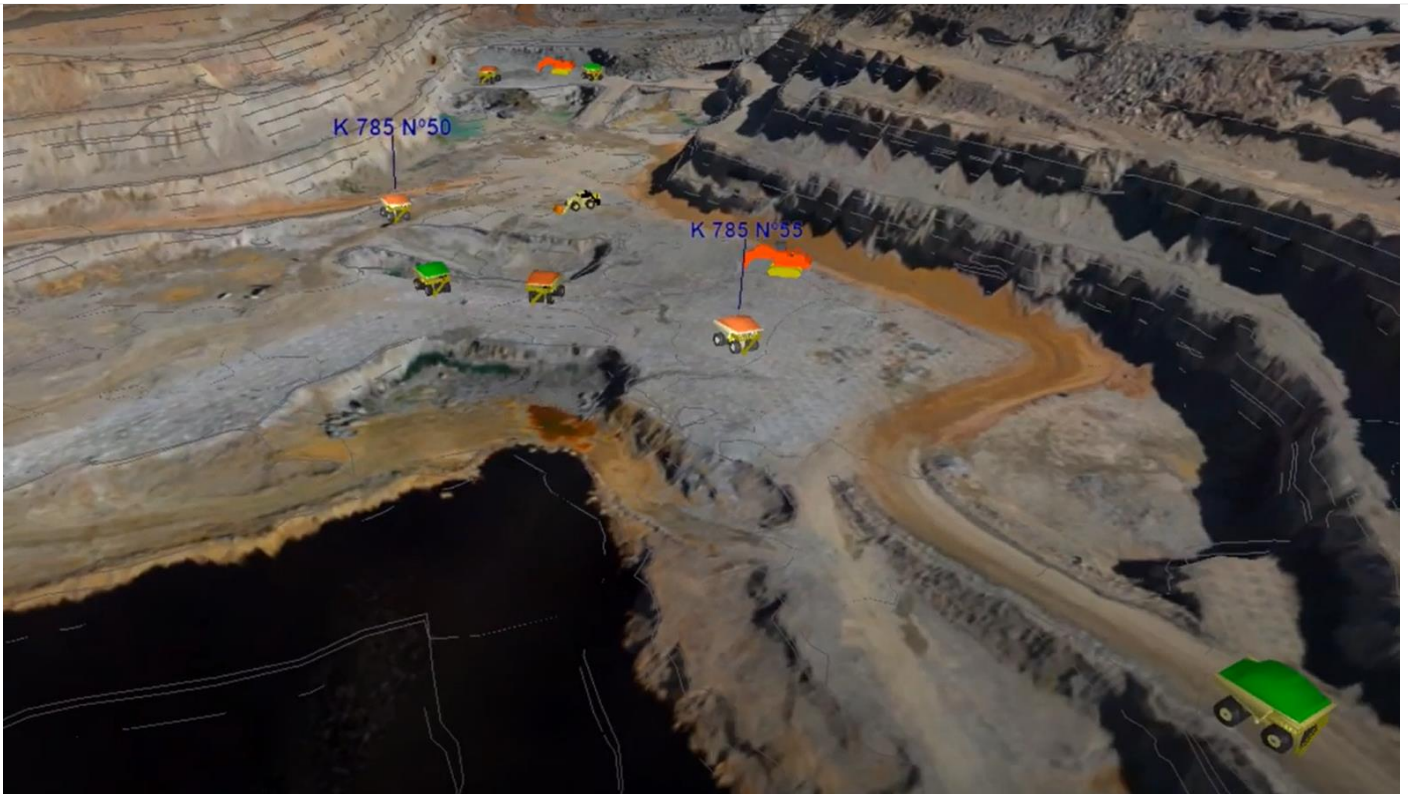
The system allows exporting the information in different formats such as KML (Google) or Excel files for management from tools external to the platform.



## INTEGRATION WITH RECMIN

All information collected on the platform is compatible with RECMIN and RECMIN PRO:

- ✓ Visualise in real-time the location of your entire fleet in 2D and 3D via RECMIN.
- ✓ Receive or send alerts from RECMIN to mobile devices.
- ✓ Use RECMIN to define sensitive areas graphically.
- ✓ Configure different types of warnings from RECMIN, e.g., for inactivity.



*3D Fleet view. RECMIN*



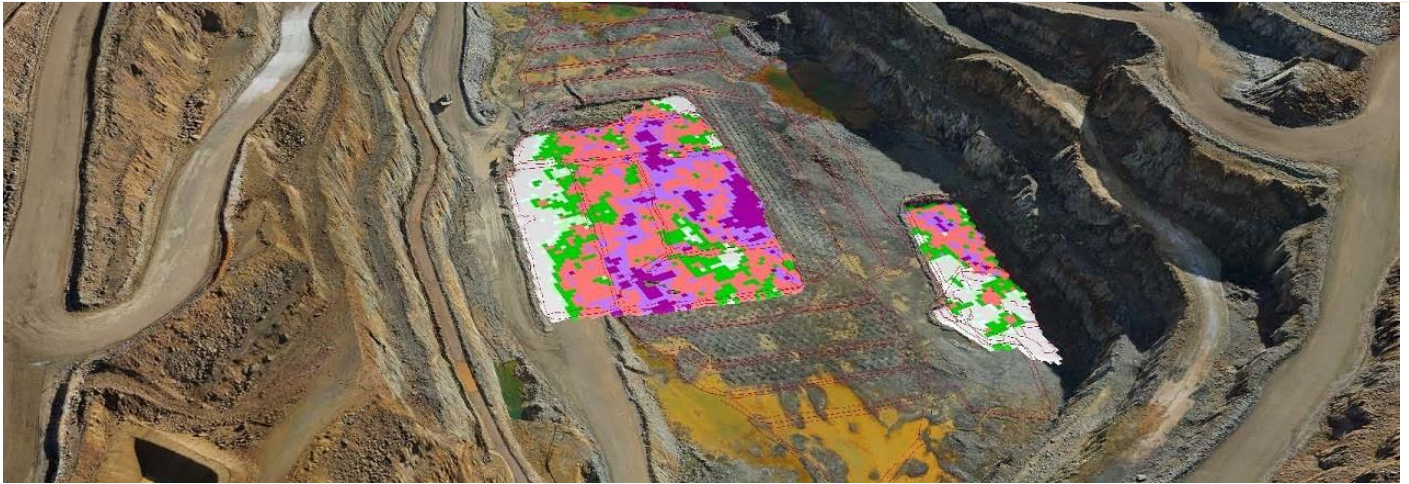
### TECHNICAL SUPPORT

One of our greatest strengths is our customer service. This includes but is not limited to technical support, platform updates with generic functionalities, and the continuous adaptation of the system to the customer's requirements.

### DEVELOPMENTS IN PROGRESS

- ✓ Exchange of manual messages between devices and automatic generation of warning messages based on regulations.
- ✓ Automatic identification of data, identification of the operator, the work being carried out, the material is loaded, the equipment in the vicinity, etc.
- ✓ Integration of the system with drones, such as sending orders to programmable drones for supervision purposes, can request images or videos of a specific area, etc.
- ✓ Integrating processes based on artificial intelligence to optimize decision-making.
- ✓ Integrating information from the equipment, such as the weight of the material loaded.
- ✓ Coordination with the grade control system to check ore loading operations online and make modifications to these operations.

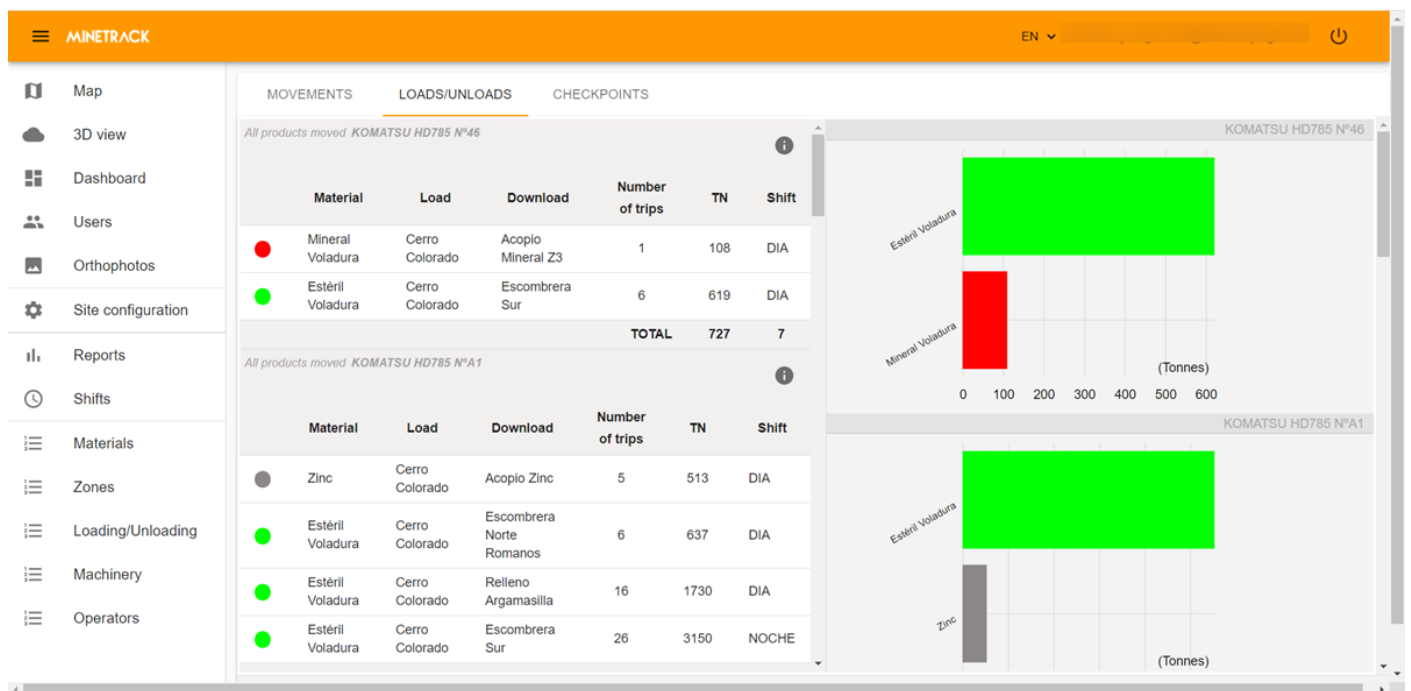




Grade control system

## PLATFORM ADVANTAGES

- ✓ Secure the information management through cloud services.
- ✓ Access to information from any location with an Internet connection.
- ✓ Digitalization of the processes related to the equipment and personnel involved in the management of earthworks.
- ✓ Improved productivity and efficiency of the work teams, by being informed always of incidents and the status of the equipment through alarm and warning systems that allow us to optimize decision-making and anticipate problems.



## RPTEC

RPTEC is a company made up of a team of technicians and professionals in mining, geology and IT, with extensive experience investigating deposits, geological resources and mining reserves, design and planning of mining operations and their development.

**CIVILNOVA SOLUTIONS**

**CIVILNOVA SOLUTIONS** is a company created with a clear idea to provide solutions in Mining, Construction and Civil Engineering to the many problems arising from software products with a lack of compatibilities, obsolete or not designed from the user's point of view. Our team of engineers, many of them with a double profile in Engineering related to civil works or mining and Computer Engineering, in collaboration with our clients, has allowed us to develop solutions that we believe are very interesting.

The objectives for any of our tools are:

- ✓ To take advantage of new technologies to improve the productivity of your company and the quality of your work.
- ✓ Useful, efficient and straightforward solutions.
- ✓ Optimize resources by reducing data collection, information processing, and exploitation time.
- ✓ To standardize working methods.
- ✓ To offer the client a plus in the management of their projects, operations, or concessions.
- ✓ To offer them a service that allows them to adapt at all times to new needs that may arise, both technological and functional.

In short, dynamic solutions focused on solving the day-to-day needs of our customers.

In addition to our central priority in developing our products, we add our philosophy in dealing with the client, offering a close and efficient support service that allows us to achieve very high levels of our client's satisfaction.



# MINETRACK

[WWW.CIVILNOVA.COM](http://WWW.CIVILNOVA.COM) :: [WWW.RPTEC.ES](http://WWW.RPTEC.ES)

**Software Development Centre**

Parque Tecnológico de Asturias  
Ed. Centroelena II OA  
Llanera. Asturias - SPAIN  
(+34) 984 086 393  
[info@civilnova.com](mailto:info@civilnova.com)